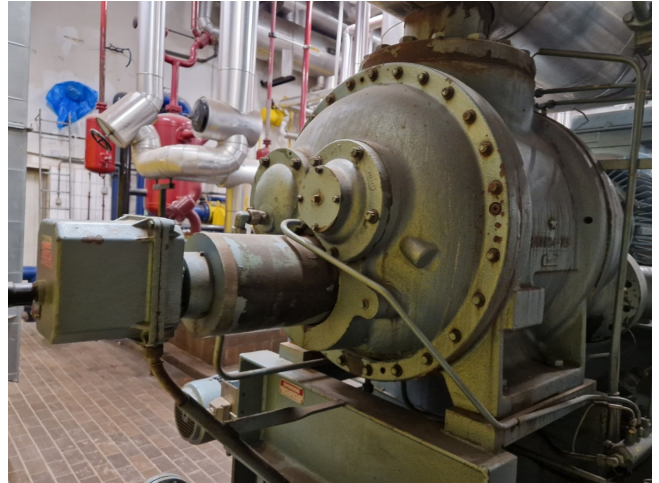


## Grasso GSL 240-26

### Specifications

Marka	Grasso
Typ	GSL 240-26
Czynnik chłodzący	NH 3 (ammonia)
Rozładunek	✓
Kontrolka wydajności	✓
Panel kontrolny	✓
m3 / h	2408,4
Rozmiary	4200x2000x2550 mm (LxWxH)
Stock	1



### Description

#### Used Grasso GSL 240-26

Used Grasso GSL 240-26 screw compressor on NH3 (Ammonia). The compressor has a displacement of 2408,4 m<sup>3</sup>/h and comes with a control cabinet.

\*Why choose for HOSBV? We are not only the largest used refrigeration specialist in Europe, but also, we deliver all equipment including an extensive test, warranty and an industrial cleaning. \*Optionally we can also perform a new paint job and arrange the logistics.

